

# Opportunities for young people in Slindon and the surrounding area



## Children's Playground

- Beautiful and safe children's playground & field accessed via a footpath beside the former Newburgh Arms
- Recreation and sports ground at Mill Road, just south of the A29: used by the cricket, football and stoolball clubs with a pavilion and children's playground
- For more information contact Bonny Beere, Secretary for The Association of Slindon Sports Clubs



## Pre-School activities

- Honey Pot - Parents, babies and children under 5 meet in Madehurst on the second Monday of the month - Check details with Alice Cossar on 01243 814706 or Becky Moore on 01243 814258
- Valley View Mother and Child Group meets in Madehurst every Wednesday. Contact Sarah on 01243 814340
- Pre-school classes are available nearby in Walberton 07899 037216, Eastergate 07743 938043 and other surrounding villages.



## Slindon C of E Primary School (opposite the Coronation Hall)

- Our local primary school in the heart of the village with its own playground and field provides children aged 4-11 with an exciting place to learn.
- A secure, caring and happy environment where everyone values and respects each other and talent and creativity can flourish.
- Come and visit us to see the children at work and get a true picture of why parents hold this place of learning in such high regard. Telephone Jane Walters, Headteacher, on 01243 814330 to arrange a visit.

## Local Independent Schools

- **Slindon College:** A small, boarding and day school for boys aged 9-16 housed in the former Manor House with beautiful grounds and views over the Slindon Estate. Visitors welcome – contact the Headmaster Ian Graham on 01243 814320.
- **Great Ballard School:** A boarding and day school providing nursery, pre-prep and middle (13+) schooling at Eartham House, a Lutyens-designed mansion in 20 acres of parkland and playing fields. Contact the School Office on 01243 814236 to arrange a visit.

## Churches

- Children's Church meets at St Mary's C of E, Slindon on the 4<sup>th</sup> Sunday of each month at 10.00am. Contact Rosemary Barrett on 01243 814265 or just come along.
- Family Service at St Mary's Church on 2<sup>nd</sup> Sunday of each month at 10.00am.
- There is also a lively youth group once a month at St Mary's.
- Children are always welcome at St Richard's Catholic Church in Slindon. Mass at 9.00am on Sundays.
- There are Baptist and Free Church facilities in the nearby villages of Walberton and Yapton.

## Swimming

- Arun Leisure Centre, Felpham (4 miles) - information at [www.arun.gov.uk](http://www.arun.gov.uk)
- Westgate Centre, Chichester (6 miles) – information at [www.chichesterweb.co.uk](http://www.chichesterweb.co.uk)
- Arundel Lido (3 miles) – summer months, outdoor heated swimming for toddlers and children in landscaped grounds with fabulous views of the castle and café facilities. Details at [www.arundel-lido.com](http://www.arundel-lido.com)



## National Trust - Slindon

- The National Trust maintains the Slindon Estate of woods, farms and downland with many footpaths and parking places
- It provides guided walks for children and families to explore the local habitat and wildlife.
- Further information from the National Trust or on the village website [www.slindon.com](http://www.slindon.com).

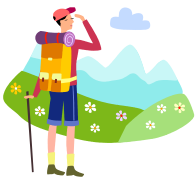


## Coronation Hall

- The village hall can be hired for birthday parties or other events
- Full kitchen and toilet facilities + stage, seating and lighting
- See the village website for details: [www.slindon.com](http://www.slindon.com)

*Other Slindon village events for children and families include an annual children's party, Sussex Day celebrations, harvest supper, summer fêtes and local village plays and pantomimes, and the famous Pumpkin's at Top Road.  
Look at the Village Diary [www.slindon.com](http://www.slindon.com)*

## Scouts, Cubs & Beavers ...



- 1<sup>st</sup> Arundel (Earl of Arundel's Own) Scout group – (established 1908) – Beaver Scouts 6-8 years, Cub Scouts 8-10 years and Scouts 10 ½ – 14 years. [www.arundelscouts.org.uk](http://www.arundelscouts.org.uk)
- 1<sup>st</sup> Yapton & Ford Scout Group Scout Hut, Drove Lane, Yapton – Beavers, Cubs and Scouts Contact the Group Scout Leader 077891 11375

## Guides, Brownies & Rainbows ...

- Arundel guides, brownies and rainbows - spanning age range from 4 - 14 years all meet at different times on Monday late pm/evening at the Arundel Scout Hall – contact Karen Snewin 01903 884192 for more information. Also Arundel Rangers 14 – 25 years meet on Mondays.



## More Sports Facilities & Clubs ....

- Slindon Recreation & Sports ground – play cricket football and stoolball For more information contact Councillor Steve Chilver 814560
- Madehurst Cricket Club Join the Madehurst Colts 8-13 year olds girls and boys Saturday a.m. 10.00 –12.00 in the summer season Contact Jeremy Martin 01243 814634
- Six Villages Sports Centre, Westergate – 2 miles [www.sixvillagesportscentre.co.uk](http://www.sixvillagesportscentre.co.uk)
- Kick Boxing - Slindon Coronation Hall – Tuesday nights



## And a taster of things to discover further afield.....

### Sussex by the Sea ....

- Clymping Beach, West Beach and the sea front at Littlehampton – 15 minutes away.
- Look & Sea Activity Centre in Littlehampton
- West Wittering and East Head – safe sandy beaches and dunes.
- Chichester Harbour – sailing, boating and harbour trips [www.conservancy.co.uk](http://www.conservancy.co.uk)
- Arundel - Arundel Wildfowl and Wetlands Centre, castle, boating lake, river trips, ghost experience, putting and playgrounds.

## On the Downs ...

- West Sussex Wildlife Trust – provides extensive activities for children in and around Slindon  
[www.sussexwt.org.uk](http://www.sussexwt.org.uk)
- Weald & Downland Museum, Singleton – an open air museum of historic buildings from 13th century to Victorian times. Children's activity days in the holidays. [www.wealddown.co.uk](http://www.wealddown.co.uk)
- Amberley Working Museum – a 36 acre open air industrial museum – exciting displays, transport collections, crafts and nature trails. [www.amberleymuseum.co.uk](http://www.amberleymuseum.co.uk)
- Bignor Roman Villa – ancient house and farm in a spectacular setting [www.bignorromanvilla.co.uk](http://www.bignorromanvilla.co.uk)
- South Downs – walking trails, horse-riding and pony centres – check out South Downs Online.



## In the Town ....

- Chichester Youth Theatre for young people aged 10 – 19 years of age [www.cft.org.uk](http://www.cft.org.uk)
- Chichester Library for a wide range of resources and activities for children and young people
- Chichester Museum - a wealth of exciting displays which bring history alive.  
[www.westsussex.gov.uk](http://www.westsussex.gov.uk)
- Pallant House Modern Art Gallery in Chichester – look out for children's art workshops normally free– look at the events page on [www.pallant.org.uk](http://www.pallant.org.uk)
- South Downs Planetarium –study the stars and the planets [www.southdowns.org.uk](http://www.southdowns.org.uk)
- Fishbourne Roman Palace – discover Chichester's Roman past [www.sussexpast.co.uk](http://www.sussexpast.co.uk)
- Tangmere Military Aviation Museum – 3 miles away - a day out for the whole family  
[www.tangmere-museum.co.uk](http://www.tangmere-museum.co.uk)

